

Beam/Purlin

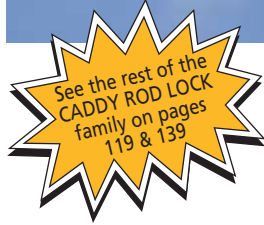


Beam/Purlin

CADDY® ROD LOCK Beam Clamp

Features

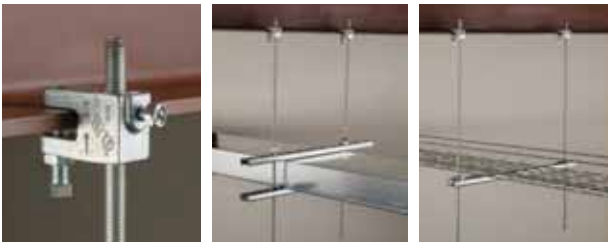
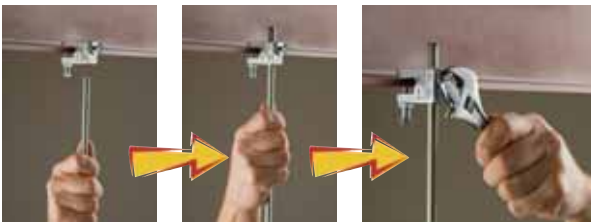
- Works with slightly damaged threads and minor burrs on the threaded rod
- Reduces installation time up to 60%
- Load capacity up to 500 lbs- depending on flange thickness
- UL® 203 & UL 2239 Listed
- FM® Approved



Part Number	Description	Standard Packaging Quantity
CRLB37EG	3/8" CADDY® ROD LOCK Beam Clamp	100

Notes:

1. Load Rating for flanges 1/8"-5/16" is 250 lbs and for flanges 3/8"-7/16" is 500 lbs.
2. CRLB37EG Beam Clamp is FM Approved when installed in the bottom mount orientation.
3. CRLB37EG Beam Clamp is UL Listed for fire sprinkler applications when a lock nut is installed on the threaded rod on the bottom side of the beam clamp.
4. For use on plain and electro-galvanized (EG) hardware only



Beam/Purlin

Hammer-On Flange Clip



Features

- Provides a “portable” 1/4” hole
- Fits most beams and bulb tees
- Installs with just a hammer

Part Number	Flange Thickness (in)	Standard Packaging Quantity	Static Load (lbs)
2H4	3/32 to 9/64	100	160
4H24	1/8 to 1/4	100	200
4H58	5/16 to 1/2	100	200
4H912	9/16 to 3/4	100	200



See CADDY® SPEED LINK in the Hangers/Hanging Systems chapter for more information

Beam/Purlin

Spring Steel Beam Clamps

Features

- Eliminates offset bending conduit
- BCISN375 has built-in smart nut which snaps directly onto 3/8" -16 threaded rod, is adjustable and removable, and eliminates extensive "threading" into place
- Easy installation to beam flanges up to 1/2"
- Accommodates standard 1/4"-20 or #10-24 threaded bridle rings
- Supports 1/4" and 3/8" threaded rod, S-hooks, electrical boxes, conduit and bridle rings



Fig. #1

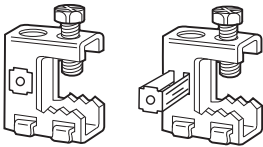


Fig. #2

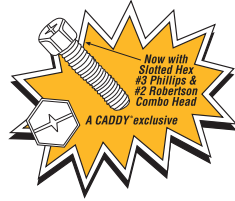


Fig. #3



Fig. #4



Fig. #5



Fig. #6



Beam/Purlin

Part Number	Fig. #	Description	Static Load (lbs)	Standard Packaging Quantity
BC	1	Beam clamp through 1/2" flange	100	100
BCISN375	2	Beam clamp through 1/2" flange with 3/8-16 Smart Nut	100	100
BC812M	3	1/2" or 3/4" conduit to beam through 1/2" flange	100	100
BC16M	3	1" conduit to beam through 1/2" flange	100	100
BC20M	3	1 1/4" conduit to beam through 1/2" flange	100	100
BC24M	3	1 1/2" conduit to beam through 1/2" flange	100	50
BC32M	3	2" conduit to beam through 1/2" flange	100	50
BC812MSM	4	1/2" or 3/4" conduit to beam through 1/2" flange, side mount	25	100
BC16MSM	4	1" conduit to beam through 1/2" flange, side mount	25	100
BC20MSM	4	1 1/4" conduit to beam through 1/2" flange, side mount	25	100
BC24MSM	4	1 1/2" conduit to beam through 1/2" flange, side mount	25	50
BC32MSM	4	2" conduit to beam through 1/2" flange, side mount	25	50
BC8P	5	1/2" conduit to beam through 1/2" flange	25*	100
BC12P	5	3/4" conduit to beam through 1/2" flange	25*	100
BC16P	5	1" conduit to beam through 1/2" flange	25*	100
BC8PSM	6	1/2" conduit to beam through 1/2" flange, side mount	15*	100
BC12PSM	6	3/4" conduit to beam through 1/2" flange, side mount	15*	100
BC16PSM	6	1" conduit to beam through 1/2" flange, side mount	15*	100

*Ultimate static load limit.

Notes: When using rigid conduit on P-Series, use next size larger clip (1/2" Rigid use 12P).

Beam/Purlin

Beam Clamps

Features

- Easy installation to beam flanges up to 1/2"
- Supports 1/4" threaded rod, 1/4" threaded bridle rings and boxes
- Available riveted to conduit clips 1/2" to 2"
- Bright zinc finish
- Eliminates offset bending conduit



Fig. #1

Static Load (lbs): 100

Part Number	Fig. #	Rigid (in)	EMT (in)	Standard Packaging Quantity
BC200	1	-	-	50
BC200CD0B	2	1/2	1/2	50
BC200CD1B	2	3/4	3/4	50
BC200CD2.5B	2	-	1 1/4	50
BC200CD2B	2	1	1	50
BC200CD3B	2	1 1/4	1 1/2	50
BC200CD4B	2	1 1/2	-	25
BC200CD5B	2	2	2	25



Fig. #2

Notes: Threaded hole on back and bottom. See Misc. Components section for threaded bridle rings.

Big Beam Clamp

Features

- Ideal for electrical, mechanical, and HVAC applications



Static Load (lbs): 200

Part Number	Description	Standard Packaging Quantity
BC400	For 3/8-16 threaded rod or 3/8-16 bolts to beam flange through 3/4"	25



Beam/Purlin

Hammer-On Plain and Threaded Rod Hangers

Beam Clamps

Features

- Requires only a hammer to install
- Used to suspend #8 wire, 1/4", 3/8" plain rod or 1/4" or 3/8" threaded rod from beam flanges 1/8" to 3/4" thick



Fig. #1

Static Load: 200 lbs

Part Number	Fig. #	Flange Thickness (in)	Rod Size	Standard Packaging Quantity
70824	1	1/8 to 1/4	#8 wire or 1/4" Plain Rod	100
70858	1	5/16 to 1/2	#8 wire or 1/4" Plain Rod	100
708912	1	9/16 to 3/4	#8 wire or 1/4" Plain Rod	100
6A24	2	1/8 to 1/4	3/8" (Plain)	100
6A58	2	5/16 to 1/2	3/8" (Plain)	100
6A912	2	9/16 to 3/4	3/8" (Plain)	100
4TI24	3	1/8 to 1/4	1/4-20	100
4TI58	3	5/16 to 1/2	1/4-20	100
4TI912	3	9/16 to 3/4	1/4-20	100
6TI24	3	1/8 to 1/4	3/8-16	100
6TI58	3	5/16 to 1/2	3/8-16	100
6TI912	3	9/16 to 3/4	3/8-16	100
6TA24	3	1/8 to 1/4	1/4-20 or 3/8-16 Threaded*	100
6TA58	3	5/16 to 1/2	1/4-20 or 3/8-16 Threaded*	100
6TA912	3	9/16 to 3/4	1/4-20 or 3/8-16 Threaded*	100

*Nuts required.



Fig. #2



Fig. #3



Beam/Purlin

Hammer-On Flange Clip - Universal

Features

- When used with a CADDY® brand combination conduit hanger, the conduit run lines up with “knock-outs” in outlet box and eliminates offsets and bends
- Provided with a 1/4-20 thread impression so that the box may be quickly and securely attached to the clamp
- Also available with a staked stud, 1/4-20 x 3/8” to provide easier attachment of outlet boxes to beams.
- Eliminates having to use loose screws
- The combination washer-wing nut (Part No. 4WN) can be used to attach box (not included)
- Allows for use with cable ties
- 1/4-20 x 3/8” screws P/N S3575BP50 available as separate item

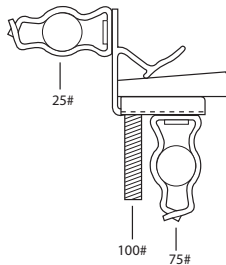


Fig. #1

Part Number	Fig. #	Flange Thickness (in)	Standard Packaging Quantity
M24	1	1/8 to 1/4	100
M58	1	5/16 to 1/2	100
M912	1	9/16 to 3/4	100
M24S	2	1/8 to 1/4	100
M58S	2	5/16 to 1/2	100
M912S	2	9/16 to 3/4	100



Fig. #2



Indicated loads are static load limits and should not be combined.



Beam/Purlin

"C" Purlin Clips - Vertical

Features

- One fastener fits flanges 1/16" to 1/4"
- Supports wire or rod from bar joist and C-Purlin
- Installs from floor with VAFT tool and conduit



Fig. #1

Static Load (lbs): 160

Part Number	Fig. #	Description	Standard Packaging Quantity
VF14	1	Universal attachment to 1/16" to 1/4" angle flange	100
VF14708	2	#8 wire or 1/4" plain rod to 1/16" to 1/4" thick vertical flange	100
VF146A	2	3/8" plain rod to 1/16" to 1/4" thick vertical flange	100
VF144TI	3	1/4-20 threaded rod to 1/16" to 1/4" thick vertical flange	100
VF146TI	3	3/8-16 threaded rod to 1/16" to 1/4" thick vertical flange	100
VF146T	3	1/4-20 or 3/8-16 threaded rod to 1/16" to 1/4" thick vertical flange (nuts required)	100

Notes: Installation tool VAFT.



Fig. #2



Fig. #3



Installation tool for VF & AF assemblies



Part Number	Description	Standard Packaging Quantity
VAFT	Installation tool for VF & AF assemblies (1/2" conduit not included)	1

Beam/Purlin

"Z" Purlin Clips - Angular

Features

- One fastener fits flanges 1/16" to 1/4"
- Supports wire or rod from bar joist and "Z"-Purlin
- Installs from floor with VAFT tool and conduit



Fig. #1

Static Load (lbs): 100

Part Number	Fig. #	Description	Standard Packaging Quantity
AF14	1	Universal attachment to 1/16" to 1/4" vertical flange	100
AF14708	2	#8 wire or 1/4" plain rod to 1/16" to 1/4" thick angle flange	100
AF146A	2	3/8" plain rod to 1/16" to 1/4" thick angle flange	100
AF144TI	3	1/4-20 threaded rod to 1/16" to 1/4" thick angle flange	100
AF146TI	4	3/8-16 threaded rod to 1/16" to 1/4" thick angle flange	100
AF146T	3	1/4-20 or 3/8-16 threaded rod to 1/16" to 1/4" thick angle flange (nuts required)	100

Notes: Installation tool VAFT.



Fig. #2



Fig. #3



Fig. #4



Beam/Purlin

"Z" Purlin Clips

Features

- Hammer-on clip compensates for angle of purlin
- Provides method for attaching conduit and boxes to purlin



Fig. #1

Part Number	Fig. #	Description	Standard Packaging Quantity
122	1	1/4" hole to Z purlin	100
123	2	1/4" bottom hole to Z purlin	100
122708	3	For #8 wire or 1/4" plain rod to Z purlin	100
1226A	3	For 3/8" plain rod to Z purlin	100
1224TI	4	For 1/4" threaded rod to Z purlin	100
1226TI	4	For 3/8" threaded rod to Z purlin	100
1226T	4	For 1/4" and 3/8" threaded rod to Z purlin, nuts required	100
1236M	5	For 3/8" conduit to Z purlin	100
123812M	5	For 1/2" to 3/4" conduit to Z purlin	100
1238P*	6	For 1/2" conduit to Z purlin	100
12312P*	6	For 3/4" conduit to Z purlin	100
12316M	5	For 1" conduit to Z purlin	100
12316P*	6	For 1" conduit to Z purlin	50
12320M	5	For 1 1/4" conduit to Z purlin	50

*When using rigid conduit on P series, use next size larger clip (1/2" Rigid use 12P).

Notes: Loads indicated are for CADDY® Fasteners only.

Purlin thickness 13 to 16 gage.

Static load limit 100 lbs except for P Series which is 25 lbs ultimate static load limit.



Fig. #2



Fig. #3



Fig. #4



Fig. #5



Fig. #6



Beam/Purlin

Multi-Flange Rod Hanger

Features

- "C" or "Z" Purlins or up to 1/4" (7 mm) horizontal beam flanges
- Slotted, Hex, Robertson, Phillips combo head bolt
- Hardened cup point setscrew for secure grip
- Fast installation of threaded components
- Integrated thread eliminates need for nuts
- Structural attachment to bottom of purlins and beams to support threaded rod
- Swivel feature option
- Electro-galvanized finish for corrosion protection



Fig. #1



Part Number	Fig. #	Description	Thread Size (in)	Standard Packaging Quantity
PH4	1	Multi-Flange Beam Clamp for 1/4" Rod	1/4-20	25
PH6	1	Multi-Flange Beam Clamp for 3/8" Rod	3/8-16	25
PHSW4	2	Multi-Flange Beam Clamp with Swivel for 1/4-20 Rod	1/4-20	25
PHSW6	2	Multi-Flange Beam Clamp with Swivel for 3/8-16 Rod	3/8-16	25

Notes: Torque wrenches are generally not used or available on many job sites, the setscrew should be tightened so it contacts the beam and then an additional 1/4 to 1/2 turn added.

Loads up to 200 lbs (0.90 kN) on C or Z purlins or 160 lbs (0.71 kN) on horizontal beams.



Fig. #2



Beam/Purlin

Retainer Strap Assemblies

Features

- Only one piece to install
- Fast hammer-on installation
- Riveted retainer strap replaces cumbersome assemblies and hardware
- Retainer strap is easily bent into position
- Lightweight design, heavyweight results



Fig. #1

Part Number	Fig. #	Description	Load Limit (lbs)
CM245	1	1/8"-1/4" Flange - 1/4-20 x 3/8" Stud	75
CM585	1	5/16" - 1/2" Flange - 1/4-20 x 3/8 Stud	75
CM912S	1	9/16" - 3/4" Flange - 1/4-20 x 3/8 Stud	75
C4TI24	2	1/8" - 1/4" Flange - 1/4-20 Threaded Rod	200
C4TI58	2	5/16" - 1/2" Flange - 1/4-20 Threaded Rod	200
C4TI912	2	9/16" - 3/4" Flange - 1/4-20 Threaded Rod	200
C6TI24	2	1/8" - 1/4" Flange - 3/8-16 Threaded Rod	200
C6TI58	2	5/16" - 1/2" Flange - 3/8-16 Threaded Rod	200
C6TI912	2	9/16" - 3/4" Flange - 3/8-16 Threaded Rod	200
CM24812M	3	1/8" - 1/4" Flange - 1/2" & 3/4" Conduit	75
CM2416M	3	1/8" - 1/4" Flange - 1" Conduit	75
CM58812M	3	5/16" - 1/4" - 1/2" & 3/4" Conduit	75
CM5816M	3	5/16" - 1/4" - 1" Conduit	75
CM912812M	3	9/16" - 3/4" - 1/2 & 3/4 Conduit	75
CM91216M	3	9/16" - 3/4" - 1 Conduit	75
C24812SM	4	1/8" - 1/4" Flange - 1/2" - 3/4" Conduit	25
C2416SM	4	1/8" - 1/4" Flange - 1" Conduit	25
C58812SM	4	5/16" - 1/4" Flange - 1/2" - 3/4" Conduit	25
C5816SM	4	5/16" - 1/2" Flange - 1 Conduit	25
C912812SM	4	9/16" - 3/4" Flange - 1/2" - 3/4" Conduit	25
C91216SM	4	9/16" - 3/4" Flange - 1 Conduit	25

Standard Packaging Quantity: 50



Fig. #2



Fig. #3



Fig. #4



Bulb Tee Clip

Features

- Provides means of support from underside of bulb tee 1-1/2" to 2-3/8" wide
- Ceiling material not defaced when correctly applied
- Requires only a hammer to install
- Eliminates offset bending conduit



Fig. #1

Part Number	Fig. #	Description	Standard Packaging Quantity
4J2438	1	Jr. Beam Clamp for bulb tees - Use standard 1/4" carriage bolt (not included)	100
4NJ2438*	2	Jr. Beam Clamp for bulb tee with 3/8" long 1/4-20, nut included	100
6NJ2438*	2	Jr. Beam Clamp for bulb tees - 3/8-16 nut included	100
4J2438S	2	Jr. Beam Clamp for bulb tees - 1/4-20, stud included	100

*Nut included

Notes: Other stud lengths quoted on request.
Will support 135 lbs static load limit from a 1-1/2" wide flange.



Fig. #2



Beam/Purlin

Wide Mouth Beam Clamps Models BC13/BC14



Fig. #1

Features

- BC13 Heavy-duty steel beam clamp to fit up to 7/8" (22 mm) thick flanges
- BC14 Heavy-duty steel beam clamp to fit flanges from 5/8" (16 mm) to 15/8" (41 mm) thick
- Hardened cup point setscrew to provide secure grip on tapered sections
- Electro-galvanized finish for corrosion protection
- Retaining strap available separately, for more secure attachment for industrial applications (see BC09 Series)
- Threaded to allow quick and easy attachment of threaded rod or bolted components

Part Number	Fig. #	Rod Size	Bolt Size	Flange Thickness (Max) (in)	Standard Packaging Quantity	Load Capacity (lbs)
BC130025EG	1	1/4-20	3/8-16	7/8	20	650
BC130037EG	1	3/8-16	3/8-16	7/8	20	650
BC130050EG	1	1/2-13	1/2-13	7/8	10	1,100
BC130062EG	1	5/8-11	1/2-13	7/8	10	1,600
BC140037EG	2	3/8-16	3/8-16	1 5/8	20	800
BC140050EG	2	1/2-13	1/2-13	1 5/8	20	1,300
BC140062EG	2	5/8-11	1/2-13	1 5/8	10	1,900

Minimum flange thickness 5/8" (16 mm).

Notes: Torque wrenches are generally not used or available on many job sites, the setscrew should be tightened so it contacts the beam and then an additional 1/4 to 1/2 turn added.

Setscrew must be tightened and torqued onto the sloped side of the I-beam.

Retaining strap available separately, for more secure attachment.



Fig. #2



Reversible Beam Clamps Model 300 & 310

Features

- Conforms with Federal Specification WW-H-171 (Type 23), Manufacturers Standardization Society ANSI®/MSS-SP-58 (Type 19 & 23), install in accordance with ANSI/MSS-P-69
- Malleable iron clamp with electro-galvanized finish for enhanced corrosion protection
- Available in hot dip galvanized finish (special order)
- Hardened cup point setscrew to provide secure grip on tapered sections
- Accommodates attachment of 1/4" dia. threaded rod, bridle rings and boxes from three positions – top, bottom and back
- Retaining strap available separately (for Model 300C)
- Reversible for attachment to top or bottom flange



Fig. #1

Part Number	Fig. #	Rod Size	Flange Thickness (in)	Fastener Height (in)	Fastener Width (in)	Standard Packaging Quantity	Bottom Mount Load (lbs)	Top Mount Load (lbs)
3000037EG	1	3/8-16	3/4	1 9/16	13/16	100	250	500
3000050EG	1	1/2-13	3/4	1 13/16	1 1/16	50	760	950
3000062EG	1	5/8"	3/4	1 13/16	1 1/16	50	760	950
3000075EG	1	3/4"	3/4	1 3/4	1 1/8	50	760	950
3100037EG	2	3/8"	1 1/4	2 1/16	13/16	50	250	500
3100050EG	2	1/2"	1 1/4	2 3/8	1 1/16	50	760	950
BC260025EG	3	1/4-20	1/4	-	-	100	100	250

Notes: Safety factor of 3.5. Available in hot dip galvanized finish (special order).

Finish: Electro-zinc plated (EG)



Fig. #2



Fig. #3



Beam/Purlin

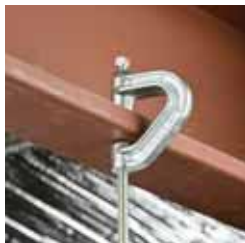
Multi-Purpose Purlin Clamp Models 315



Features

- Large mouth opening (15/8" - 41 mm) to fit large thick flange (bottom flange) steel beams or angles and large lip "C" or "Z" Purlins
- Available for threaded rod sizes 3/8" diameter
- Locknut and hardened cup point setscrew to provide secure grip on tapered sections
- Malleable iron clamp with electro-galvanized finish for enhanced corrosion protection
- Available in hot dip galvanized finish (special order)
- Attaches to a wide variety of structural sections including "C" or "Z" Purlins, angles, channels and beams

Part Number	Rod Size	Bolt Size	Flange Thickness (in)	Surface Finish	Standard Packaging Quantity	Rec# Load (lbs)
3150037EG	3/8-16	3/8-16	1	EG	25	400



Beam/Purlin

Beam Clamp With Swivel Option Model BC10



Fig. #1

Features

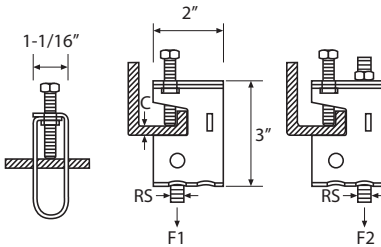
- For attachment to beams or angles up to 3/4" (20 mm) thick
- Hardened cup point setscrew to provide secure grip on tapered sections
- Stamped steel with electro-galvanized finish for enhanced corrosion protection
- J-Bolt assembly available for more secure attachment in industrial applications
- Designed to allow swivel up to 15° from bottom holes or with the use of BC15 swivel (available separately) for attachment to inclined beams without bending the rod
- Accommodates rod sizes up to 1/2" dia. (max)

Part Number	Fig. #	Rod Size (in)	Flange Thickness (in)	Surface Finish	Standard Packaging Quantity	Max. Rec. Load (lbs)
BC100000EG	1	1/2	3/4	EG	25	300; 500
BC101500EG	2	1/2	3/4	EG	25	500

Note: F1 is the load rating from the front hole (500 lbs); F2 is the load rating from the back hole (300 lbs)



Fig. #2



Beam/Purlin

Beam Retainer Accessories

J-Bolt for use with BC10 Beam Clamp

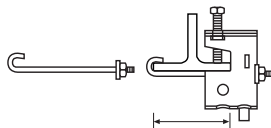


Fig. #1

Part Number	Fig. #	Description
BC110000EG	1	Beam Clamp with 8" J-Bolt
BC120000EG	1	Beam Clamp with 12" J-Bolt



Retainer Straps for use with BC13 and BC14 Beam Clamps



Fig. #2

Part Number	Fig. #	Description	Standard Packaging Quantity	Flange Width (in) [Max]
BC090900EG	2	Anchor Strap 9"	50	6
BC091200EG	2	Anchor Strap 12"	50	9
BC091500EG	2	Anchor Strap 15"	25	12

Beam/Purlin

Rod Hanger Beam Clamp Model 200



Features

- For attachment to beams or angles up to 3/4" (20 mm) thick
- Locknut and hardened cup point setscrew to provide secure grip on tapered sections
- Stamped steel with electro-galvanized finish for enhanced corrosion protection
- Available for 3/8" to 5/8" threaded rod size
- Available in hot dip galvanized finish
- Retaining strap available separately for more secure attachment for industrial applications (for Model 34SL, 300C and 35RS)

Part Number	Rod Size	Bolt Size	Flange Thickness (in)	Height (in)	Width (in)	Standard Packaging Quantity	Rec# Load (lbs)
2000037EG	3/8-16	3/8-16	3/4	2 3/8	2 1/4	100	250

Notes: Safety factor of 5.



Pipe-To-Beam Clamps

Features

- Ideal for direct attachment of RMC or service pipe sections
- Malleable iron casting with steel hardware
- Hot dip galvanized coating for superior corrosion protection
- Range for 3/8" to 4" diameter pipe
- Available with stainless steel hardware (special order)



RA

Part Number	Pipe Size (in)	Rec# Load (lbs)	Standard Packaging Quantity	Qty. Exception
PAR- — RA- 0037HD	3/8	200	25	-
PAR- ET- RA- 0050HD	1/2	250	25	-
PAR- ET- RA- 0075HD	3/4	300	25	-
PAR- ET- RA- 0100HD	1	400	25	-
PAR- ET- RA- 0125HD	1 1/4	400	25	-
PAR- ET- RA- 0150HD	1 1/2	500	20	PAR-25
PAR- ET- RA- 0200HD	2	600	20	-
PAR- ET- RA- 0250HD	2 1/2	700	10	PAR- 10; ET-25; RA-20
PAR- ET- RA- 0300HD	3	800	10	RA-15
PAR- — RA- 0350HD	3 1/2	900	10	-
PAR- — RA- 0400HD	4	1,000	10	-

Notes: C Max is 1/4"/20 mm. Available with stainless steel hardware (special order).



PAR



ET



CADDY® ROD LOCK

Threaded Rod Mounting System

- Features a breakthrough “push-install” design that works with slightly damaged threads and minor burrs on the threaded rod
- Reduces installation time by up to 52%

