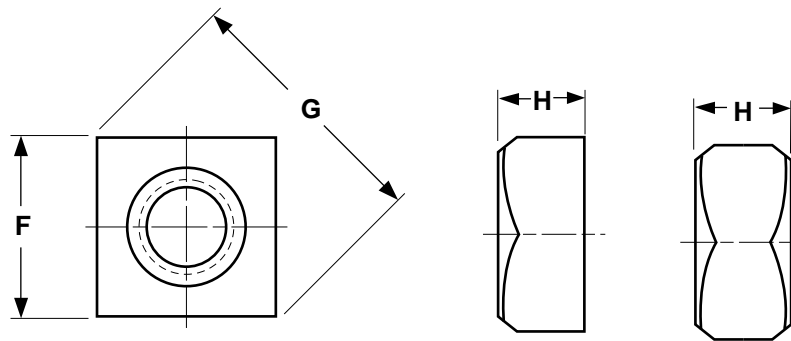


Nuts

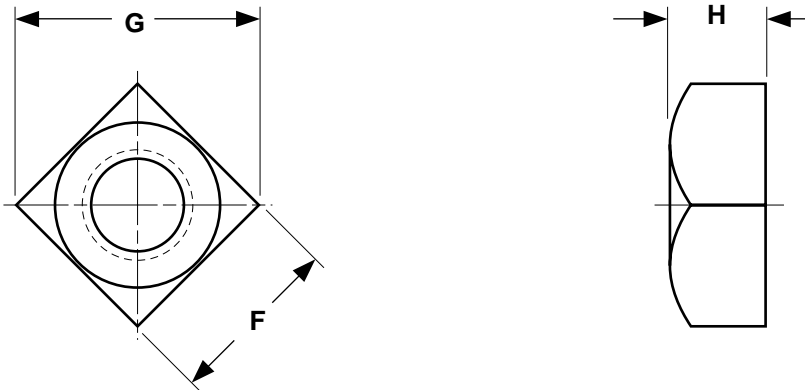
Square

Heavy Style



Nominal Size or Basic Major Dia. of Thread		HEAVY SQUARE NUTS				ANSI/ASME B18.2.2	
		F		G		H	
		Width Across Flats		Width Across Corners		Thickness	
		Max	Min	Max	Min	Max	Min
1/4	0.2500	0.500	0.488	0.707	0.640	0.266	0.218
5/16	0.3125	0.562	0.546	0.795	0.720	0.330	0.280
3/8	0.3750	0.688	0.669	0.973	0.889	0.393	0.341
7/16	0.4375	0.750	0.728	1.060	0.970	0.456	0.403
1/2	0.5000	0.875	0.850	1.237	1.137	0.520	0.464
5/8	0.6250	1.062	1.031	1.503	1.386	0.647	0.587
3/4	0.7500	1.250	1.212	1.768	1.635	0.774	0.710
7/8	0.8750	1.438	1.394	2.033	1.884	0.901	0.833
1	1.0000	1.625	1.575	2.298	2.132	1.028	0.956
1-1/8	1.1250	1.812	1.756	2.563	2.381	1.155	1.079
1-1/4	1.2500	2.000	1.938	2.828	2.631	1.282	1.187
1-3/8	1.3750	2.188	2.119	3.094	2.879	1.409	1.310
1-1/2	1.5000	2.375	2.300	3.359	3.128	1.536	1.433

Description	A four-sided, internally threaded fastener with a washer-faced top side, and a flat or chamfered bottom. They are wider and thicker than regular square nuts.
Applications/ Advantages	For use with A307 Grade A or Grade B bolts.
Material	Nuts shall be made from a carbon steel which conforms to the following chemical composition requirements-- <i>Carbon: 0.58% maximum; Phosphorus: 0.13% maximum</i>
Hardness	Rockwell B68 - C32
Proof Load	<u>Plain or Zinc-Plated:</u> 90,000 psi.; <u>Hot-Dip Galvanized:</u> 68,000 psi.
Plating	See Appendix-A for plating information.



REGULAR SQUARE NUTS										ANSI/ASME B18.2.2
Nominal or Basic Major Diameter of Thread		F			G		H			
		Width Across Flats			Width Across Corners		Thickness			
		Basic	Max	Min	Max	Min	Basic	Max	Min	
1/4	0.2500	7/16	0.438	0.425	0.619	0.554	7/32	0.235	0.203	
5/16	0.3125	9/16	0.562	0.547	0.795	0.721	17/64	0.283	0.249	
3/8	0.3750	5/8	0.625	0.606	0.884	0.802	21/64	0.346	0.310	
7/16	0.4375	3/4	0.750	0.728	1.061	0.970	3/8	0.394	0.356	
1/2	0.5000	13/16	0.812	0.788	1.149	1.052	7/16	0.458	0.418	
5/8	0.6250	1	1.000	0.969	1.414	1.300	35/64	0.569	0.525	
3/4	0.7500	1-1/8	1.125	1.088	1.591	1.464	21/32	0.680	0.632	
7/8	0.8750	1-5/16	1.312	1.269	1.856	1.712	49/64	0.792	0.740	
1	1.0000	1-1/2	1.500	1.450	2.121	1.961	7/8	0.903	0.847	
1-1/8	1.1250	1-11/16	1.688	1.631	2.386	2.209	1	1.030	0.970	
1-1/4	1.2500	1-7/8	1.875	1.812	2.652	2.458	1-3/32	1.126	1.062	
1-1/2	1.5000	2-1/4	2.250	2.175	3.182	2.956	1-5/16	1.348	1.276	

Description	A four-sided, internally threaded fastener with a flat bottom side and a chamfered, washer-crowned top.
Applications/ Advantages	Designed for use with square bolts.
Material	Nuts shall be made from a low carbon steel which conforms to the following chemical composition requirements--Carbon: 0.55% maximum; Phosphorus: 0.12% maximum; Sulfur: 0.23% maximum.
Hardness	Rockwell B68 - C32
Proof Load	90,000 psi.
Plating	See Appendix-A for plating information.