



1 5/8" Channel

Telestrut

Nuts & Hardware

General Fittings

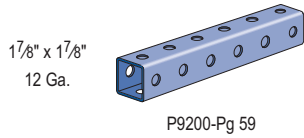
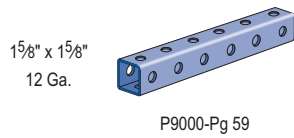
Pipe/Conduit Supports

Electrical Fittings

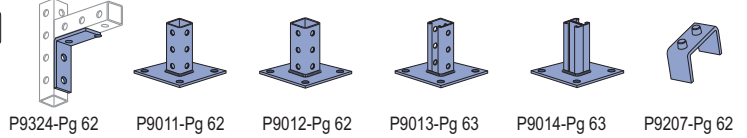
Concrete Inserts

Unipier®

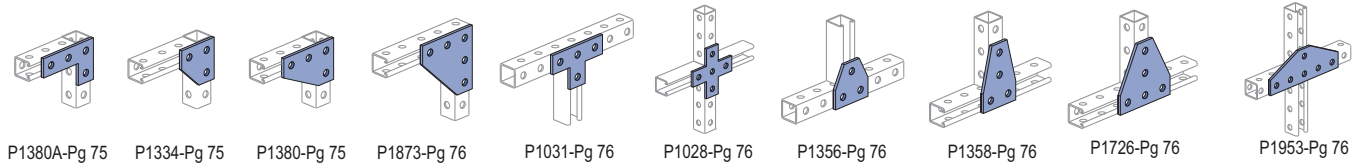
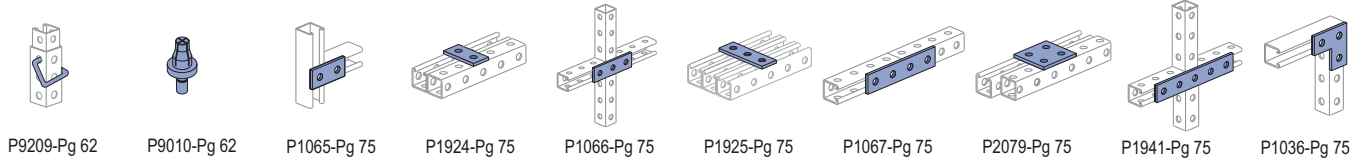
Telestrut Telescoping Tubing



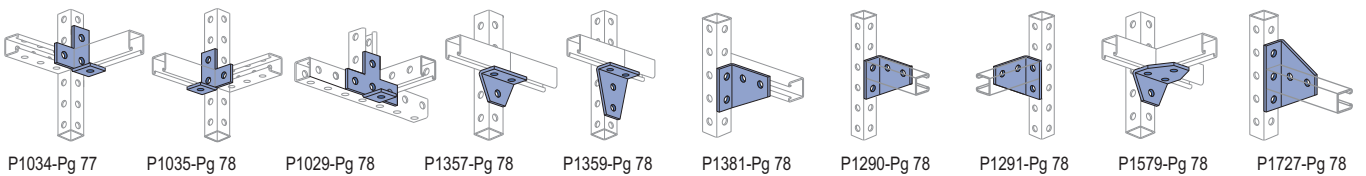
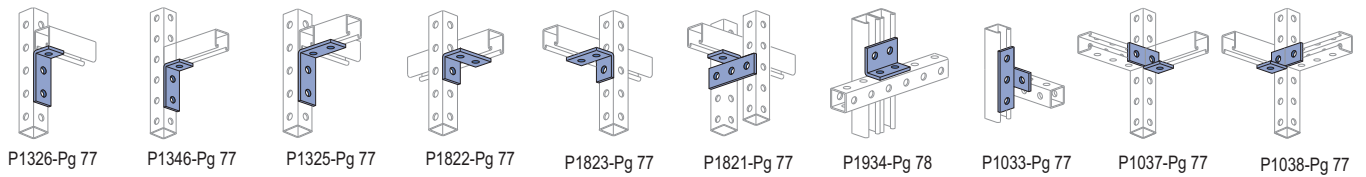
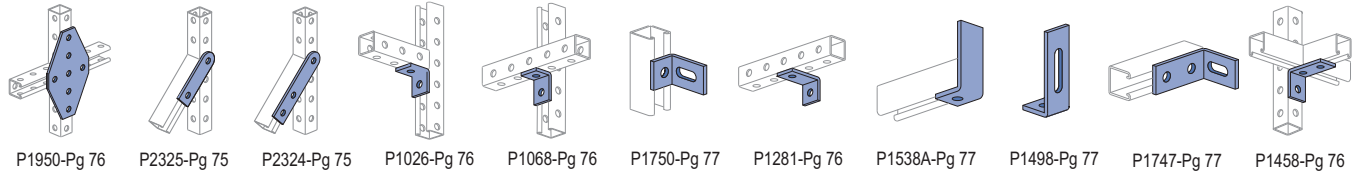
Special Fittings for Telestrut Telescoping Tubing



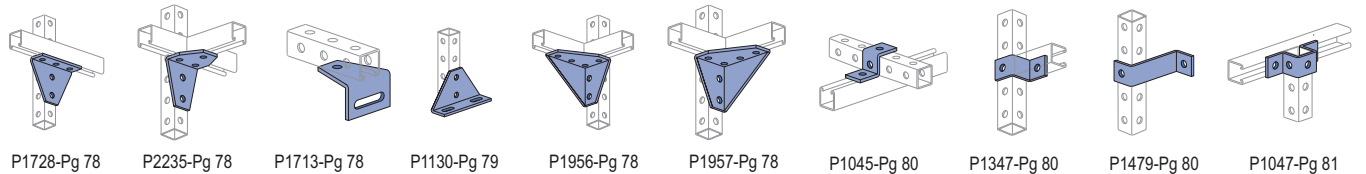
Standard 1 5/8" - Flat Plate Fittings



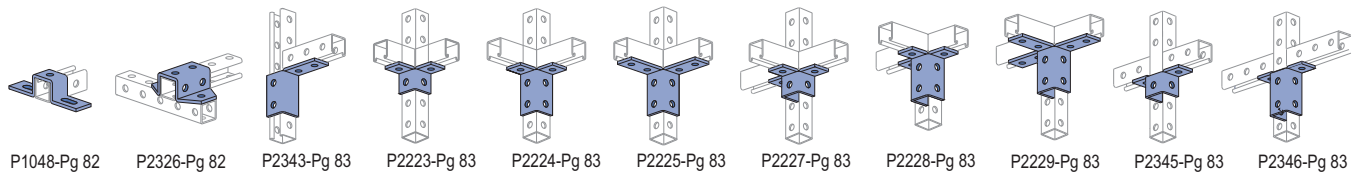
Standard 1 5/8" - Ninety Degree Fittings



Standard 1 5/8" - "Z" and "U" Shape Fittings

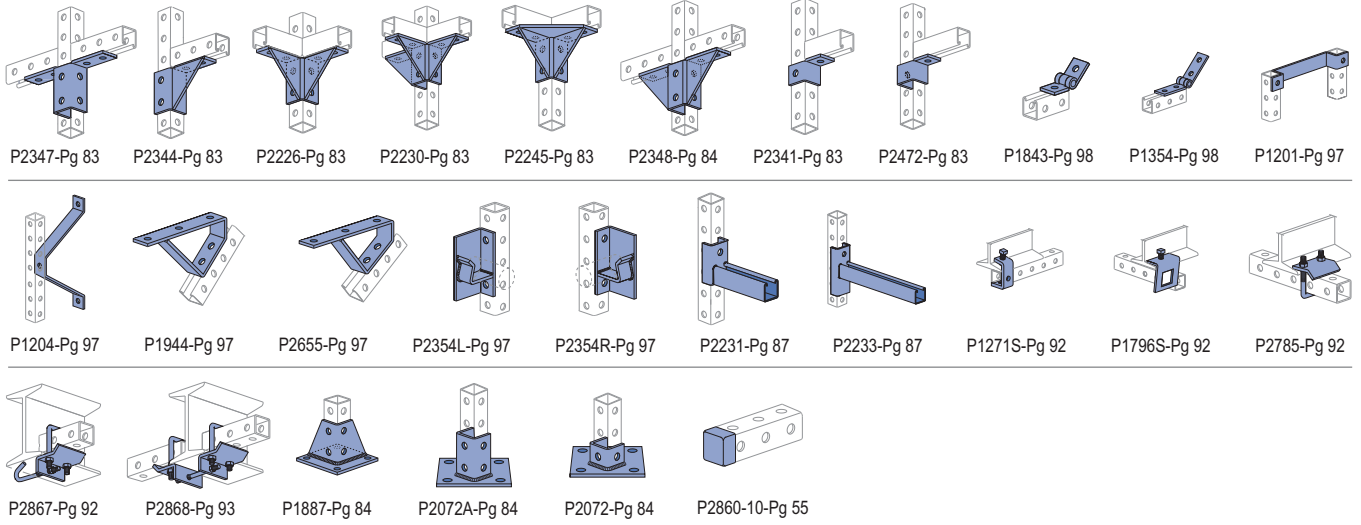


Standard 1 5/8" - Wing Shape Fittings



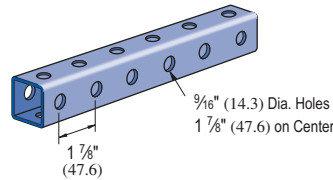
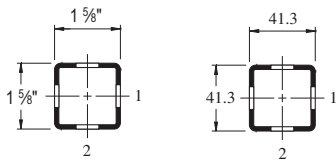
Standard 1 5/8" Metal Framing – Wing Shape Fittings

Standard 1 5/8" – Misc. Fittings



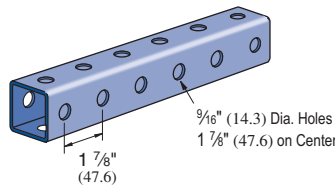
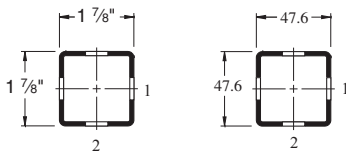
Many of the standard metal framing components are compatible with the Telestrut telescoping tubing. Refer to the appropriate page in other sections of the catalog for information on the particular fittings shown here.

P9000



Wt/100 Ft: 188 Lbs (279 kg/100 m)
 Allowable Moment 5,140 In-Lbs (580 N·m)
 12 Gauge Nominal Thickness .105" (2.7mm)

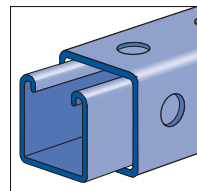
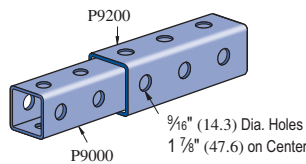
P9200



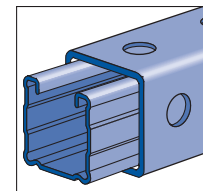
Wt/100 Ft: 223 Lbs (331 kg/100 m)
 Allowable Moment 7,480 In-Lbs (850 N·m)
 12 Gauge Nominal Thickness .105" (2.7mm)

TELESTRUT'S TELESCOPING POWER

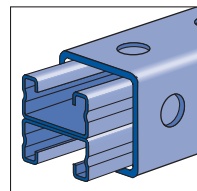
Telestrut can be combined with metal framing channel



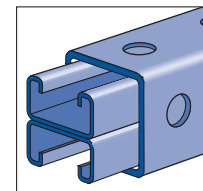
P1000 Series



P1100 Series



P4001 Series



P4101 Series